



AT-600

ROBUST.HANDY.SAFE
RADIO TRANSPORTATION SYSTEM



Get rid of wire away with AT-600 Industrial Remote Control

ALTA AT-600, a revolutionary industrial remote control.

A radio remote system specialized in moving applications i.e. Trailers/ Towing Trucks/ Winches/ Hydraulic systems..etc.

The remote gives operator convenient access to the controls of hydraulic system with efficiency and safer. ALTA remotes are also applicable to industrial Door/ Gate/ Barrier control and other variety usages as ON & OFF function.



AT-600 FEATURES

Intelligent Radio Communication: The advanced RF technology assures the operator can monitor constantly the radio communication between Transmitter and receiver.

Auto Channel Selection: This function provides an easy way to optimize channel arrangement based on the current situation in the field.

Power-on Password mode available: An extra layer of security with having password required to prevent unauthorized operation.

Wireless Remote Pairing: System data information can be transferred wireless and especially to register a replacement transmitter without any tool required.

PC software Programmable: The pushbuttons are able to be customized through its PC functional software upon variety requests.

HARDWARE ADVANCED DESIGN

Receiver pushbutton Panel (Optional available):

Offering a pushbutton panel on receiver unit for special circumstances, i.e. transmitter damaged or lost.

NC/NO relays equipped: All relays are NC/NO relay for variety of requirements.

All Weather: IP67 for transmitter and IP66 for receiver.

Pre-wired output cable: A pre-wired cable makes wiring installation quick and easy.

AT-600 features bidirectional radio communication, it helps operator monitoring the radio signal status.

AT-600 has 6 function buttons, 2 start buttons and 1 Emergency button.

AT-600pro gives control pushbutton on the receiver unit as alternative control to the transmitter and could be functioning as "pitch and catch" as well.





AT-600

RADIO TRANSPORTATION SYSTEM

SPECIFICATION

Frequency

868MHz/ 915Mhz (Frequency might be different from regions)

Numbers of available relay outputs

8 output relays & Stop relay

Transmitter power supply

2 AA Size Battery (Rechargeable Ni-MH / Alkaline)

Receiver power supply

10 ~ 42 VDC

Relay rating

NC/NO up to 20A

Functioning temperature

From -40°C ~ +85°C

Reaction time

less than 0.1 Sec

Antenna

Internal Antenna

LED power indicator

3 stages power indicator (Full, Middle, Low)

Transmitter dimension (H x L x W)/weight

39mmx112mmx62mm/135g (w/o Batteries)

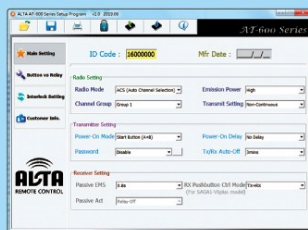
Receiver dimension (H x L x W)/weight

64mmx130mmx146mm/490g/525g (with panel)

Accessories (Option)



USB Cable



Transmitter

6 Functions Buttons with
2 Start Buttons + Stop

Receiver

(with pushbutton Panel)



Receiver

(w/o pushbutton Panel)

altaradio.com.tw



2019.07

